

IRD Swiss

IRD Swiss - Am Wasserwerk 7, D-08340 Schwarzenberg, Germany
Tel.: +49 (0) 3774-1807421, Fax: +49 (0) 3774-1807424
Mobil: +49 (0)178 8082390 eMail: ird-swiss@t-online.de

Many thanks for your enquiry and we would submit with pleasure in bank order with no binding and exemptible according the German rules VDW-502 the following items:

Unique opportunity!

**Gas-Gensets
DEUTZ TBG 441 V16 / 2.4 MW**

4 units

Deutz/MWM Gas- Gensets

Technical details:

Engine Deutz TBG 441 V16 on frame,
Year of building 1999 - running time approx. 65.000 h;
Permanent maintained; Total overhauling in year 2009;
Running time since overhauling only 60 hrs TOP condition!
Performance: 2.400 KVA 1500 Up/min Volts: 400/230 50 Hz COS 0.8 (10.4 KVA)
Additional: TEM control system, HT- Heat exchanger; many spare parts.

Price ex place Germany/unit

on demand!

Price new in 1999:

2,364,000 DM

4 units available!

**Note: those units come from German bank lease and will be sold out in very short time!
The given price is the single device value and can be reduced by complete purchase for
10.000 €each less!**

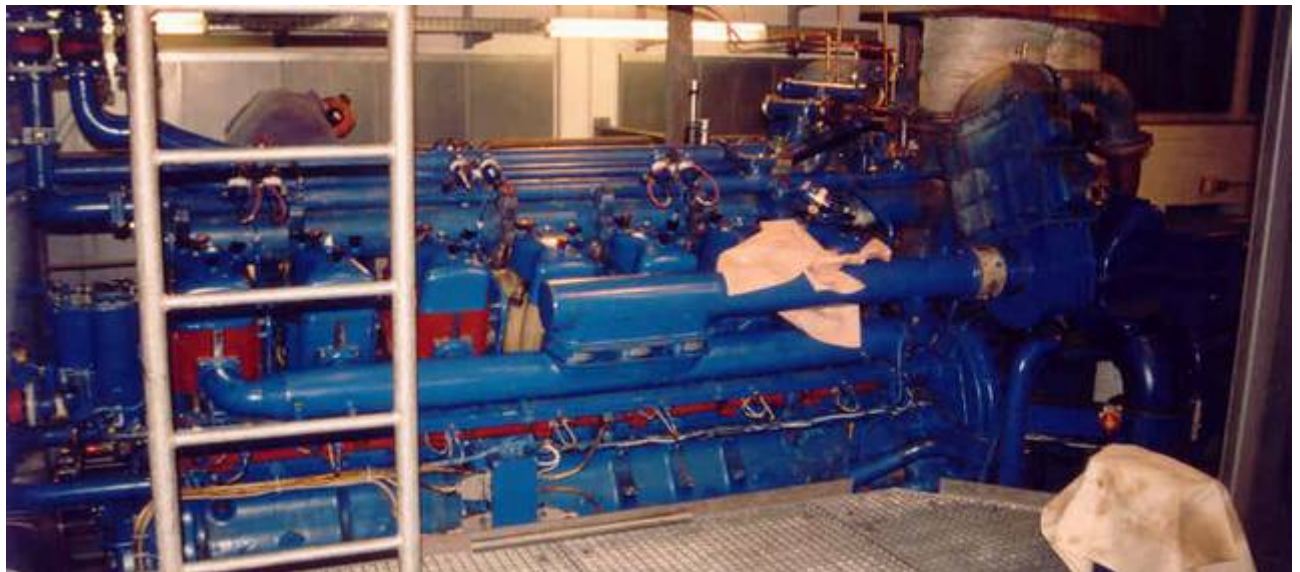
**All units are still under power and will be sold because of the high prices for natural Gas
here in Germany.**

The units are under power until 10th of January.

Pricing: **net**; for Germany additional 19% VAT.
Delivery: ex location without disassembling; optional world-wide transport available.
Delivery time: January 2011, visiting after reservation;
Payment: before loading,
Warranty: no
Reservation of title: until receiving the entire payment. Extended reservation of title is valid.



Michael Decker
Manager IRD Swiss













Wassergekühlte Otto-Gasmotoren **Water-cooled spark-ignition gas engines**
Moteurs à gaz à allumage **Motores de gas con bujías**
à refroidissement par eau **refrigerados por agua**

Motor Type Engines Type Type moteur Motor Tipo	Zyl-Zahl/Cyl. no./Nbr. de cyl./Núm. de cil.	Leistung nach DIN 6271 bzw. ISO 3046/1 Power as per DIN 6271 resp. ISO 3046/1 Puissance selon DIN 6271 resp. ISO 3046/1 Potencia seg. DIN 6271 o ISO 3046/1						Abmessungen Dimensions Dimensiones									
		min		max		bar	m/s	mm	mm	mm	mm	mm	mm	mm	mm	kg	
		kW	PS HP CV	l/min	kW												PS HP CV
G 234 VE	6V	83	127	1500	199	148	1800	7.2	8.4	129/140	10.8	1090	885	1136	825	8	
G 234 V8	8V	125	170	1500	148	133	1800	7.2	8.4	129/140	14.4	1270	815	1130	980	8	
G 234 V12	12V	187	254	1500	218	205	1800	7.2	8.4	128/140	21.6	1580	912	1125	1350	8	
G46 M216	6	81	110	1000	159	204	2000	5.9	10.7	142/180	15.2	1615	959	1420	1470	8	
G46 M216	8	107	140	1000	209	272	2000	5.9	10.7	142/180	20.3	1970	885	1507	1910	8	
G412 M216	12V	162	220	1500	300	408	2000	5.9	10.7	142/180	30.4	1937	1450	1444	2160	8	
G410 M210	10V	215	292	1500	480	544	2000	5.9	10.7	142/180	40.5	2367	1450	1522	2580	8	
BG46 M216U	6	125	170	1000	220	312	2000	8.1	10.7	142/180	15.2	2095	1050	1604	1700	8	
BG46 M216U	8	167	227	1000	307	418	2000	8.1	10.7	142/180	20.3	2495	1056	1707	2180	8	
BG412 M216U	12V	250	340	1000	480	626	2000	8.1	10.7	142/180	30.4	2544	1030	1551	2280	8	
BG410 M210U	10V	334	454	1000	814	925	2000	8.1	10.7	142/180	40.5	2974	1033	1531	2480	8	
G604 V8	8V	158	215	1000	242	329	1800	8.4	11.1	160/180	29.7	1938	1380	1665	2000	8	
G604 V12	12V	228	309	1000	363	494	1800	8.4	11.1	160/180	44.6	2100	1310	1880	3000	8	
G604 V16	16V	317	431	1000	484	638	1800	8.4	11.1	160/180	59.6	2520	1333	1920	4100	8	
G440 B-8	8	275	374	750	390	400	1000	8.5	8.0	200/270	87.3	2880	1690	2240	6800	8	
G440 B-8	8	365	495	750	480	683	1000	8.5	8.0	200/270	88.7	3300	1690	2240	8300	8	
G441 B V12	12V	550	740	750	720	878	1000	8.5	8.0	200/270	134.6	2870	2440	2385	10000	8	
G441 B V16	16V	720	993	750	960	1308	1000	8.5	8.0	200/270	178.4	3770	2440	2385	12000	8	
TB0440 B-8	8	510	686	750	820	843	1000	12.1	8.0	230/270	87.3	3980	1890	2240	7300	8	
TB0440 B-8	8	680	925	750	820	1122	1000	12.1	8.0	230/270	88.7	3870	1890	2240	8600	8	
TB0441 B V12	12V	1020	1388	750	1240	1066	1000	12.1	8.0	230/270	134.6	3480	2440	2000	11000	8	
TB0441 B V16	16V	1360	1850	750	1680	2244	1000	12.1	8.0	230/270	179.5	4090	2440	2000	13000	8	
BOV8 M228	6	605	714	750	685	504	1000	10.5	9.3	240/280	78.0	3350	1420	2080	8200	8	
BOV8 M228	8	700	952	750	868	1205	1000	10.5	9.3	240/280	101.8	4200	1420	2080	10700	8	

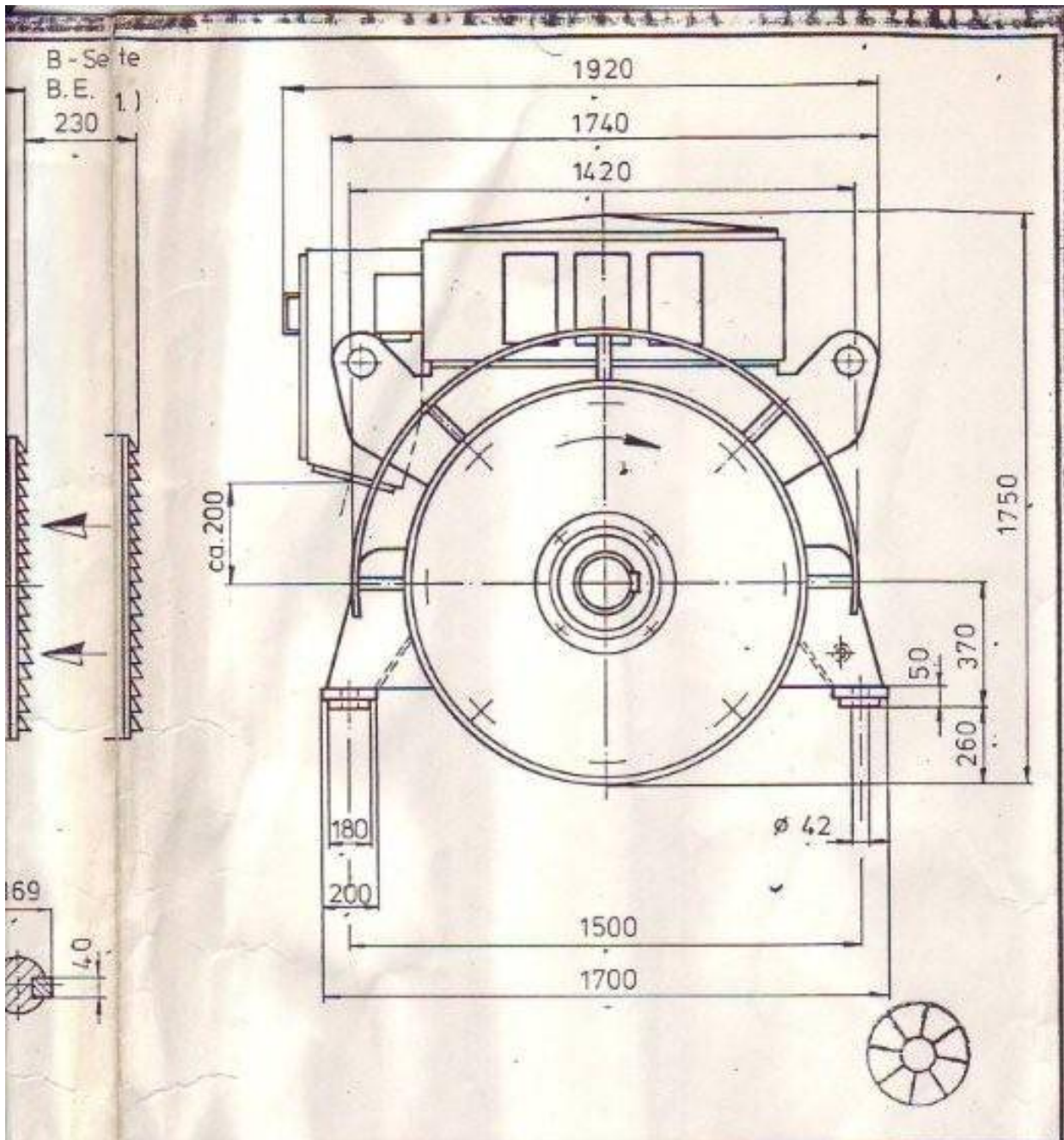
Wassergekühlte Diesel-Gasmotoren **Water-cooled dual-fuel engines**
Moteurs diesel à gaz **Motores dual-fuel**
à refroidissement par eau **refrigerados por agua**

DG440 B-8	8	280	343	750	315	428	1000	8.9	9.0	230/270	87.3	2890	1820	2435	6900	8
DG440 B-8	8	335	450	750	420	571	1000	8.9	9.0	230/270	88.7	3390	1820	2435	8400	8
DG441 B V12	12V	500	680	750	630	856	1000	8.9	9.0	230/270	134.6	2970	2000	2395	10200	8
DG441 B V16	16V	675	912	750	840	1142	1000	8.9	9.0	230/270	179.5	3710	2000	2395	12000	8
TBDG440 B-8	8	510	684	750	626	840	1000	12.1	9.0	230/270	87.3	3080	1690	2435	7400	8
TBDG440 B-8	8	680	925	750	626	1122	1000	12.1	9.0	230/270	88.7	3070	1690	2435	8900	8
TBDG441 B V12	12V	1020	1388	750	1240	1686	1000	12.1	9.0	230/270	134.6	3480	2000	2395	11200	8
TBDG441 B V16	16V	1360	1850	750	1686	2244	1000	12.1	9.0	230/270	179.5	4200	2000	2395	13800	8
TBDG610 LR	8	1775	2407	750	1875	2650	750	16.2	8.0	330/380	184.7	5190	3130	3770	25000	8
TBDG610 LR	8	2390	3210	750	2490	3400	750	16.2	8.0	330/380	248.3	6170	3130	3770	32000	8

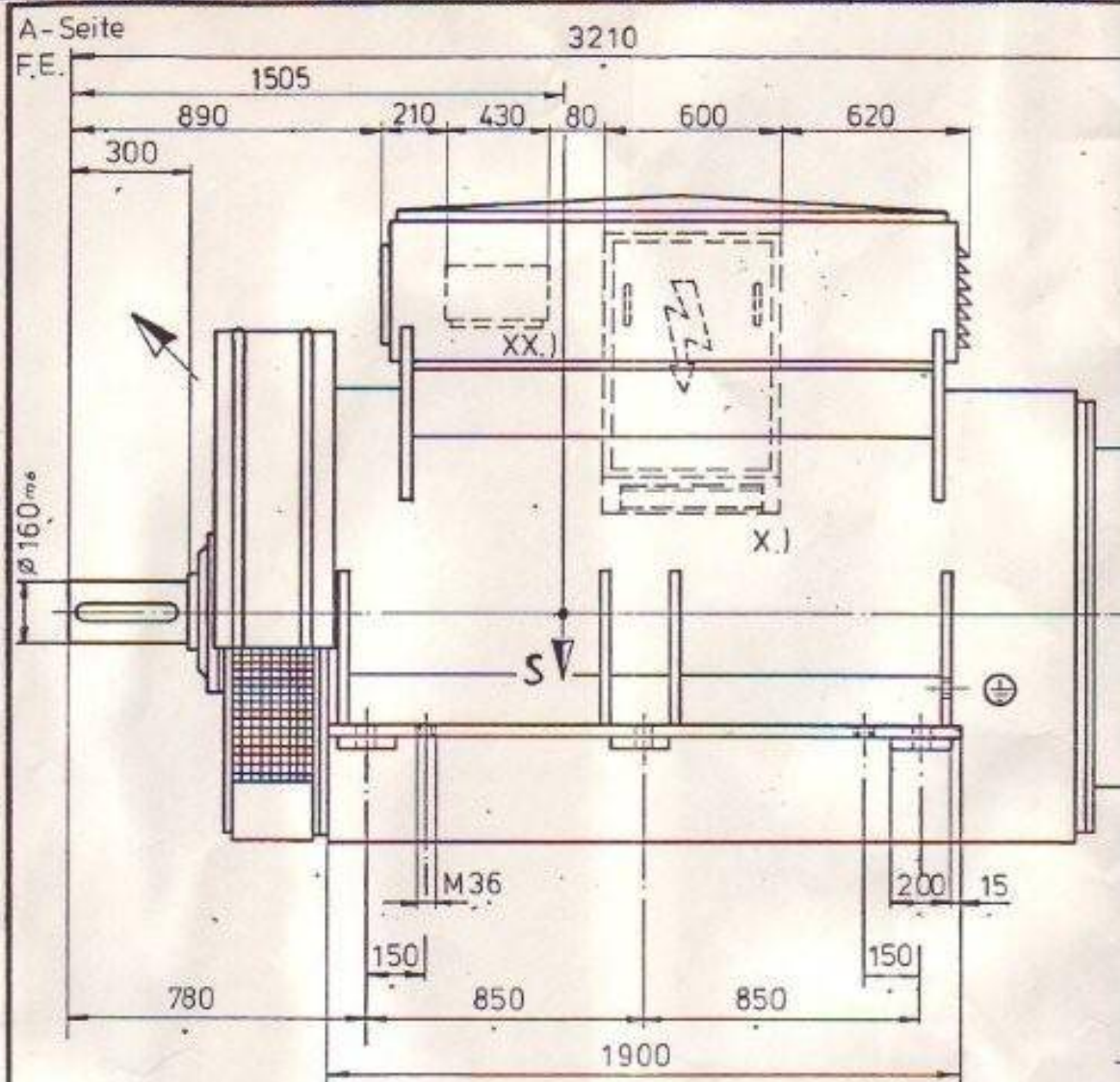
MOTOREN-WERKE MANNHEIM AG

Carl-Benz-Strasse Postfach 1563
 D-6800 Mannheim 1 - West Germany
 Telefon: (06 21) 364-1 · Telex: 462 341





		Abweichung ist für Maße o. Toleranzang. mitt. DIN 7168		Rauheit für Oberflächenzeichen Reihe 2 DIN 3141		Werkstoff Rohteil Nr. Mod.Nr./Rohmat		✓ ✓ ✓	
01		28.1.87		Copyright reserved		Klass. Nr. 7537383210		Menge ✓ ME ✓	
Zust. And. Mitt. Nr.		Datum		Name		Verwendungsbereich		Maßstab ✓	
19 86		Datum		Name		Benennung Drehstrom-Synchron-Generator SDGB 6303-6 Three-phase alternator SDGB 6303-6 Schutzart IP23 10,5 kV. Bauform B 20. Enclosure IP23 10,5 kV. Design B 20.			
7		26.9.		Schmidt		RELIANCE ELECTRIC COMPANY LTD. KREFELD / GERMANY		Ident. Nr. 205209	
Gep. üft		2.2.		A		Ersetzt für:		Format 3	
Entst. aus:						Ersetzt durch:			



Drehrichtung rechts, ~~links~~. Kabelausführung ~~links~~, links auf Antriebsseite gesehen.
 Maße in mm. Die bildliche Darstellung ist für die Ausführung nicht verbindlich.
 Liefer ist mit eingelegter, ganzen Paßfeder dynamisch ausgewuchtet.

- 1.) Platzbedarf zur Demontage der Abdeckung
- S = Schwerpunkt
- X.) Hochspannungsklemmenkasten: Kabelausf. 3 x Pg 36 und 1 x Pg 29
- XX.) Niederspannungsklemmenkasten: Kabelausf. 3 x Pg 21

Gewicht ca. 8400 kg, Wellenzeichnung Id.Nr. 301380 A1

Direction of Rotation: clockwise, ~~anti clockwise~~. Cable entry ~~right~~, left as seen from drive side.
 All dimensions are in mm. The shown drawing doesn't be obligatory for execution.
 The rotor is dynamically balanced with complete key attached.

- 1.) Space required to remove cover
- S = Centre of gravity
- X.) High voltage terminal box: cable entry 3 x Pg 36 + 1 x Pg 29
- XX.) low voltage terminal box: cable entry 3 x Pg 21

weight ca. 8400 kg, shaft drawing Id.Nr. 301380 A1